

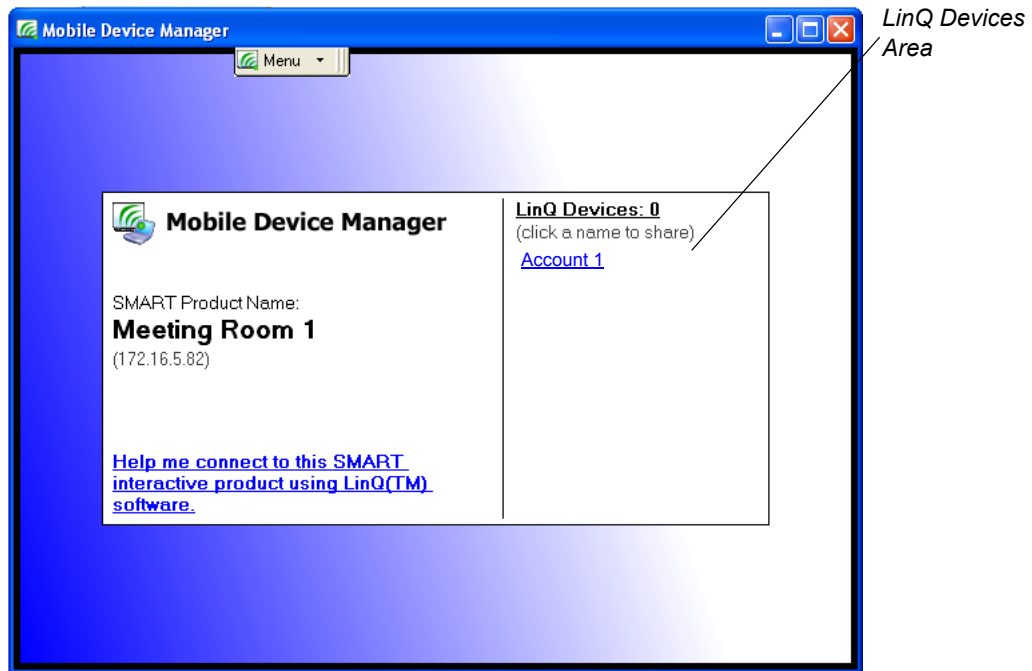
# Switching Accounts on the Same Laptop With LinQ™ Software 1.2



**Applies to:** LinQ™ software 1.2, SMART Board™ software 9.7 and Windows® XP and Windows Vista™ operating systems

## Issue

When you switch from one account to a second account on your laptop using fast user switching, the first account (Account 1) remains listed in the *Mobile Device Manager* window in the **LinQ Devices** area, and the second account (Account 2) isn't listed.



## Cause

The Mobile Device Manager connects to one account on a single laptop at a time. As a result, if a second account is launched, it may not connect to the Mobile Device Manager.

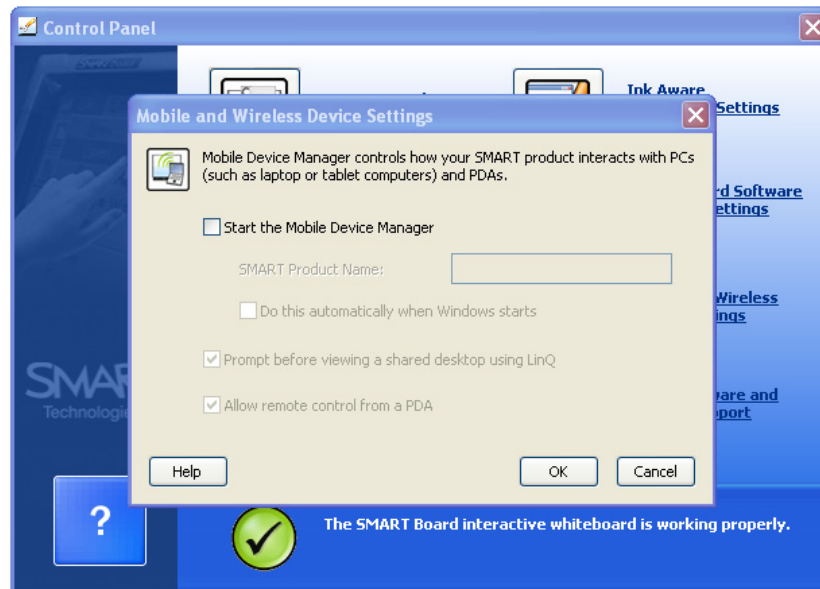
## Solution


Turn off the Mobile Device Manager before you switch to Account 2 using fast user switching, and then restart it after you log on to Account 2.

## To turn off and restart the Mobile Device Manager

1. While logged on to Account 1, right-click the **Mobile Device Manager** icon  in the notification area, and then select **Application Settings**.

The *Mobile and Wireless Device Settings* dialog box appears with the SMART Board software control panel behind it.



2. Clear the **Start the Mobile Device Manager** check box, and then click **OK**.
3. Close the SMART Board software control panel.
4. Switch to Account 2 using fast user switching.
5. Right-click the **Mobile Device Manager** icon  in the notification area, and then select **Application Settings**.

The *Mobile and Wireless Device Settings* dialog box appears.

6. Select the **Start the Mobile Device Manager** check box, and then click **OK**.  
Close the SMART Board software control panel.

## Background

In the Windows XP and Windows Vista operating systems, you can create multiple accounts on a single computer, and you can switch between these accounts without closing programs. This feature is called fast user switching. Fast user switching enables you to continue running all your open programs and switch to another account.

**First Published:** October 2, 2007

**Last Updated:** October 11, 2007

**SMART Technologies**  
1207 – 11 Avenue SW, Suite 300  
Calgary, AB T3C 0M5  
CANADA



[www.smarttech.com/support](http://www.smarttech.com/support) [www.smarttech.com/contactsupport](http://www.smarttech.com/contactsupport)  
Support +1.403.228.5940 or Toll Free 1.866.518.6791 (Canada/U.S.)

© 2007 SMART Technologies ULC. All rights reserved. LinQ, SMART Board, smarttech and the SMART logo are trademarks or registered trademarks of SMART TechnologiesULC in the U.S. and/or other countries. Windows is either a registered trademark or a trademark of Microsoft Corporation in the U.S. and/or other countries. All other third-party product and company names may be trademarks of their respective owners. U.S. Patent Nos. 5,448,263; 6,141,000; 6,326,954; 6,337,681; 6,741,267; 6,747,636; and 7,151,533. Canadian Patent No. 2,058,219. U.S., Canadian and other patents pending. Contents are subject to change without notice. 10/2007.