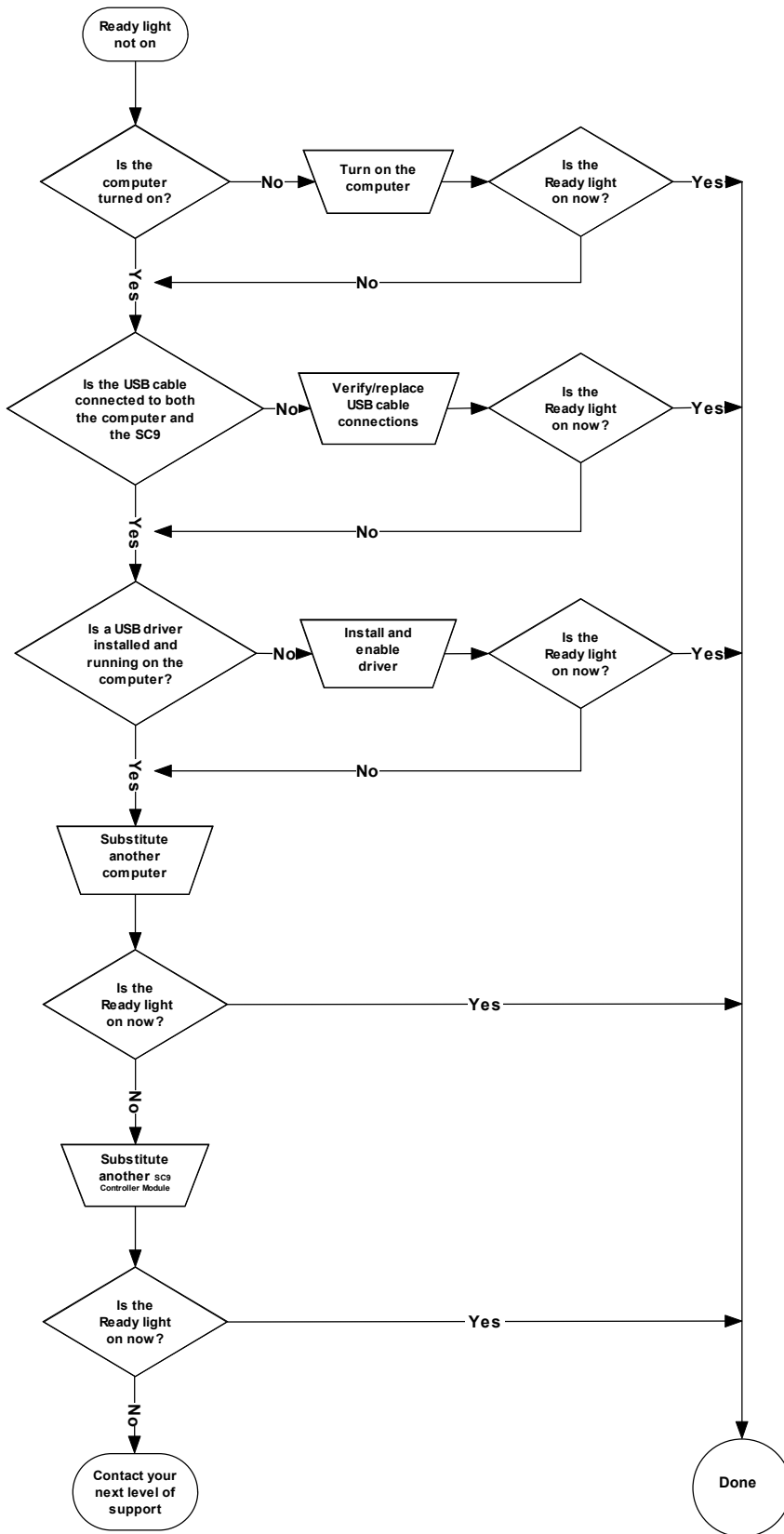


# Fast Track Troubleshooting: SMART Board™ 600 Series Interactive Whiteboard Ready Light Not On



Non-powered USB hubs or repeaters can't provide enough power to the interactive whiteboard.

If you haven't installed a USB driver on the computer, the USB port can't provide power to the interactive whiteboard.

If possible, replace the computer with another that has been successfully used with a SMART Board™ interactive whiteboard. Refer to the product specifications for minimum computer hardware and software requirements.

**NOTE:** Before substituting the SC9, contact your next level of support to ensure that all other possibilities have been checked.

Replace the SC9 with another that has been tested on an interactive whiteboard.

**SMART Technologies**  
1207 – 11 Avenue SW, Suite 300  
Calgary, AB T3C 0M5  
CANADA

[www.smarttech.com/support](http://www.smarttech.com/support) [www.smarttech.com/contactsupport](http://www.smarttech.com/contactsupport)  
Support +1.403.228.5940 or Toll Free 1.866.518.6791 (Canada/U.S.)

© 2005–2007 SMART Technologies ULC. All rights reserved. SMART Board, and smarttech are trademarks or registered trademarks of SMART Technologies ULC in the U.S. and/or other countries. All other third-party product and company names may be trademarks of their respective owners. Patent No. US5448263; US6141000; US6326954; US6337681; US6741267; US6747636; US7151533; and CA2058219. Other patents pending. Contents are subject to change without notice. 12/2007.