

Rotating the Desktop of Your SMART Board™ for Flat-Panel Displays Interactive Overlay and Actalyst™ Interactive Overlay



Applies to: SMART Board™ for *Flat-Panel Displays* interactive overlays, Actalyst™ interactive overlays and Windows® operating systems

Overview

SMART Board for *Flat-Panel Displays* interactive overlays and Actalyst interactive overlays are available in landscape and portrait formats. Regardless of the format you own, you can mount and use your interactive overlay in either the portrait or landscape format.

This document describes how to rotate your desktop 90° and adjust the overlay's vertical and horizontal axis.

Details

To rotate your desktop 90°

1. Select **Start > Control Panel**.
2. Double-press **Display**.
3. Press the **Settings** tab.
4. Press **Advanced**.

A dialog box appears.

5. Press the **Rotation** tab.

NOTE: If the **Rotation** tab isn't present, download and install [Pivot® software](#).

6. Select **Rotate 90° Right**, if you want to switch from portrait to landscape format.

OR

Select **Rotate 90° Left**, if you want to switch from landscape to portrait format.

7. Press **OK**.


Your desktop rotates 90° and a *Rotation Settings* dialog box appears.

NOTE: Your press on the display and your mouse do not behave as expected. However, you must use the mouse for the remaining steps and procedures. Do not press the display.

8. Click **Yes** if you want to keep the new format, or click **No** to return to the default format.

NOTE: If you don't click **Yes** or **No** within 15 seconds, your computer's desktop automatically returns to its default format.

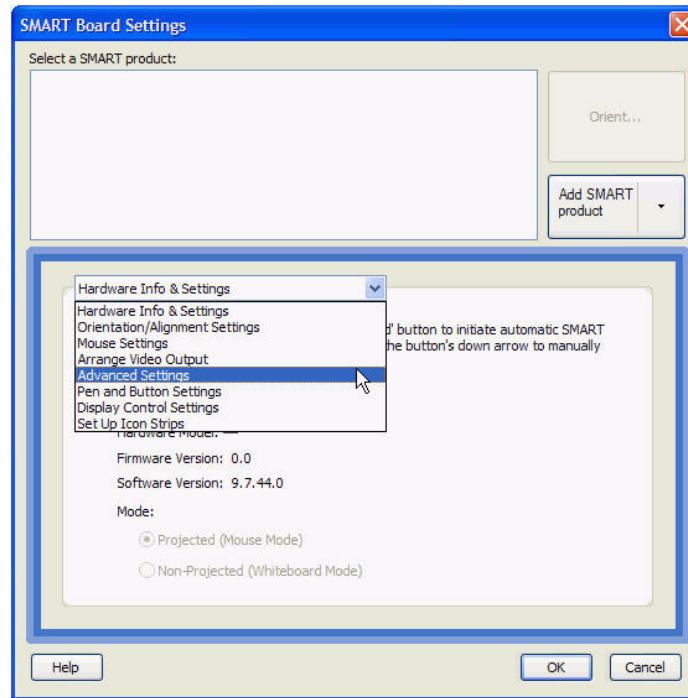
To adjust the overlay's vertical and horizontal axis

1. Double-click the **SMART Board** icon  in your computer's notification area.
The Start Center toolbar appears.

2. Click the **Control Panel** icon .

The control panel dialog box appears.

3. Click **SMART Board Settings**.
The *SMART Board Settings* dialog box appears.
4. Select **Advanced Settings** in the list.



5. Select **Swap Vertical and Horizontal Axis**.
6. If you rotated your desktop 90° to the right, select **Fip Vertical Axis**.
OR
If you rotated your desktop 90° to the left, select **Flip Horizontal Axis**.
7. Click **OK**.

Your press on the display and your mouse's movements behave as expected.

NOTE: If you ever need to change the calibration or enumeration settings of your interactive overlay, press **Defaults** before making any adjustments.

First Published: November 13, 2007

SMART Technologies
1207 – 11 Avenue SW, Suite 300
Calgary, AB T3C 0M5
CANADA



www.smarttech.com/support www.smarttech.com/contactsupport
Support +1.403.228.5940 or Toll Free 1.866.518.6791 (Canada/U.S.)

© 2007 SMART Technologies ULC. All rights reserved. SMART Board, Actalyst, smarttech and the SMART logo are trademarks or registered trademarks of SMART Technologies ULC in the U.S. and/or other countries. All other third-party product and company names may be trademarks of their respective owners. Patent No. US5448263; US6141000; US6326954; US6337681; US6741267; US6747636; US6803906; US6919880; US6947032; US6954197; US6972401; US7151533; US7184030; US7236162; CA2058219; EP1297488; ES2279823; CN1310126; and DE60124549. Other patents pending. Contents are subject to change without notice. 11/2007.