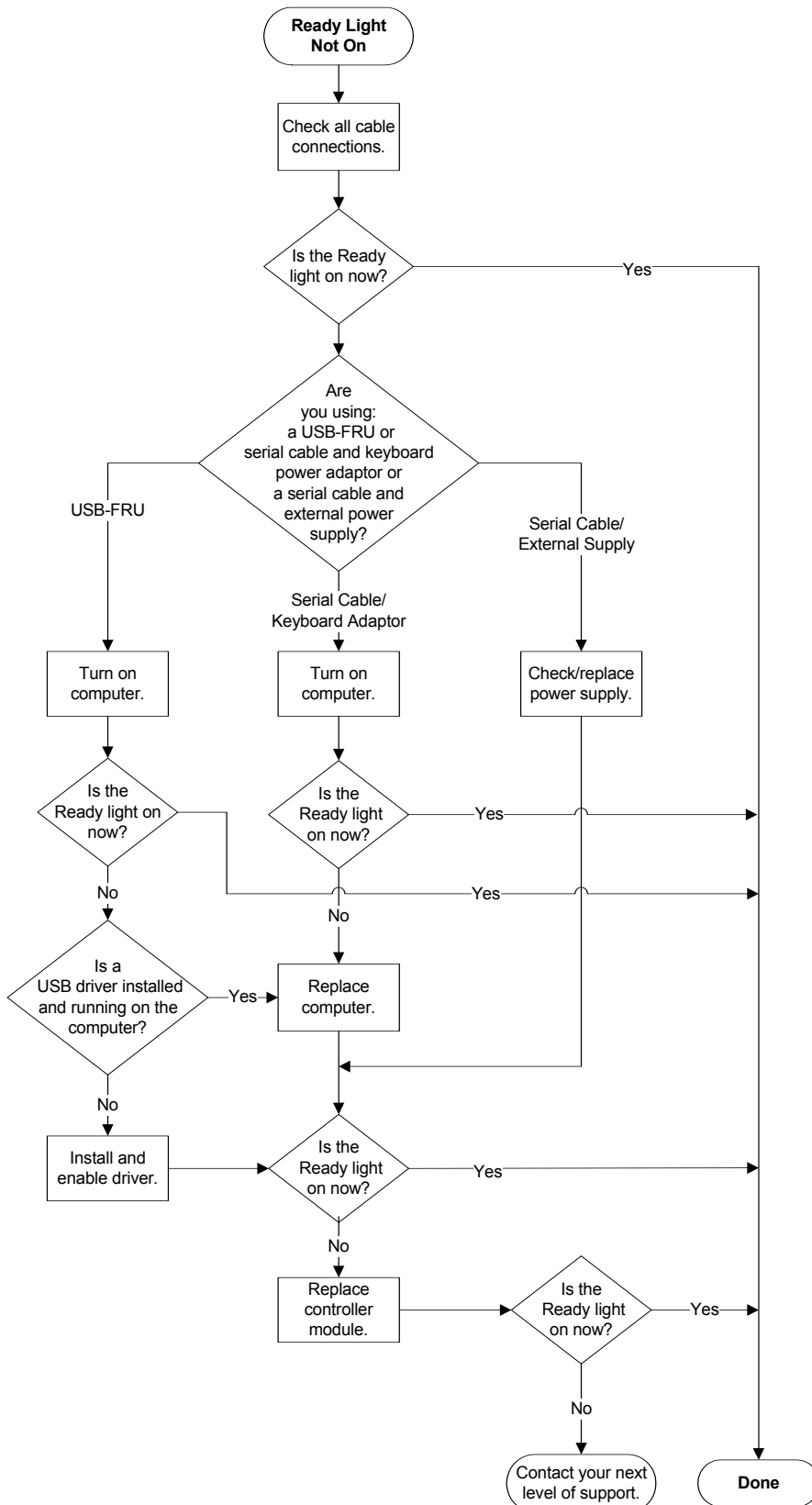


Fast Track Troubleshooting: SMART Board™ 500 Series Interactive Whiteboard Ready Light Not On



Check that all cables are securely connected, and check them for visible damage, such as bent or broken pins. Replace cables, if necessary.

NOTES

- If you are using a USB-FRU, non-powered USB hubs or repeaters may not be able to provide enough power to the interactive whiteboard.
- If you haven't installed a USB driver on the computer, the USB port can't provide power to the interactive whiteboard.

If possible, replace the components, such as the power supply or computer, with another that has been successfully used with a SMART Board™ interactive whiteboard. Refer to the product specifications for minimum computer hardware and software requirements.

NOTE: Before substituting the controller module, contact your next level of support to ensure that all other possibilities have been checked.

Replace the controller module with another that has been successfully tested on an interactive whiteboard.

SMART Technologies
1207 – 11 Avenue SW, Suite 300
Calgary, AB T3C 0M5
CANADA

www.smarttech.com/support www.smarttech.com/contactsupport
Support +1.403.228.5940 or Toll Free 1.866.518.6791 (Canada/U.S.)

© 2007 SMART Technologies ULC. All rights reserved. SMART Board and smarttech are trademarks or registered trademarks of SMART Technologies ULC in the U.S. and/or other countries. All other third-party product and company names may be trademarks of their respective owners. Patent No. US5448263; US6141000; US6326954; US6337681; US6741267; US6747636; US7151533; and CA2058219. Other patents pending. Contents are subject to change without notice. 12/2007.