



SMART Classroom Suite 2009 Installation Guide

Extraordinary made simple™

SMART™

Product Registration

If you register your SMART product, we'll notify you of new features and software upgrades.

Register online at www.smarttech.com/registration.

Keep the following information available in case you need to contact SMART Technical Support.

Product Key: _____

Date of Purchase: _____

Trademark Notice

SMART Board, the SMART logo and smarttech are trademarks or registered trademarks of SMART Technologies ULC in the U.S. and/or other countries. All other third-party product and company names may be trademarks of their respective owners.

Copyright Notice

©2009 SMART Technologies ULC. All rights reserved. No part of this publication may be reproduced, transmitted, transcribed, stored in a retrieval system or translated into any language in any form by any means without the prior written consent of SMART Technologies ULC. Information in this manual is subject to change without notice and does not represent a commitment on the part of SMART.

Patent No. US6320597; US6326954; US6741267; US7151533; US7499033; and CA2252302. Other patents pending.

07/2009

Contents

1	Welcome	1
2	Installing SMART Classroom Suite	2
	Starting the Installation	2
	Installing Teacher Components	4
	Installing Student Components	7
	Activating SMART Classroom Suite	10
3	Using SMART Classroom Suite	11
	Using Teacher Components	11
	Using Student Components	12
4	Configuring SMART Sync Student.....	14
	Running the SMART Sync Student Configuration Tool ..	14
	Automatically Configuring SMART Sync Student Installations	19
A	Existing SMART Software and the Suite	20
B	Language Setup.....	22

C	Customer Support.....	25
	Online Information and Support.....	25
	Training.....	25
	Technical Support.....	25
	General Inquiries.....	26
	Registration.....	26

Chapter 1

Welcome

SMART Classroom Suite 2009 is a suite of SMART Technologies software for teachers and students. By using the suite with products such as the SMART Board™ interactive whiteboard, teachers can create highly interactive learning environments in their classrooms.

SMART Classroom Suite 2009 integrates the following SMART software:

- SMART Notebook
- SMART Notebook SE (Student Edition)
- SMART Response CE
- SMART Sync

In addition, the suite includes SMART Board drivers and Gallery content.

System administrators can also install SMART Sync Class List Server and Administrator Tool using MSI command lines or SMART Install Manager.

Chapter 2

Installing SMART Classroom Suite

SMART Classroom Suite consists of two sets of components:

- Teacher components
- Student components

Install the Teacher components on the teacher's computer and the Student components on the students' computers.

Starting the Installation

You can start the installation by inserting the SMART Classroom Suite 2009 DVD into your computer or by downloading the Teacher or Student installation wizard executable (.exe) files from the SMART Support website.

Using the DVD

To start the installation from the DVD

1. Insert the DVD into the computer.

The *SMART Classroom Suite* dialog box appears.

NOTE

If the dialog box doesn't appear, browse to and open **[DVD Drive]CDBrowser.exe** using Windows® Explorer.

3 | CHAPTER 2 – INSTALLING SMART CLASSROOM SUITE

2. Click **Install Teacher Components** to install Teacher components (see page 4).

OR

Click **Install Student Components** to install Student components (see page 7).

Using the Installation Wizards

There are two installation wizards for SMART Classroom Suite 2009: one for Teacher components and the other for Student components. Download these wizards from the SMART Support website.

To download and start the Teacher installation wizard

1. In a Web browser, browse to the following address:
www2.smarttech.com/st/en-US/Support/Downloads/ClassroomSuite/CS09.htm
2. Click **Download** in the Teacher installation section.
3. Enter the requested information, and then click **Start download**.
4. Save the file to a temporary location on the teacher's computer.
5. Double-click the file's icon.

The Teacher installation wizard appears.

To download and start the Student installation wizard

1. In a Web browser, browse to the following address:
www2.smarttech.com/st/en-US/Support/Downloads/ClassroomSuite/CS09.htm
2. Click **Download** in the Student installation section.
3. Enter the requested information, and then click **Start download**.
4. Save the file to a temporary location on the student's computer.

5. Double-click the file's icon.

The Student installation wizard appears.

Installing Teacher Components

After starting the SMART Classroom Suite 2009 Teacher installation wizard, you can run this wizard to install the following components on the teacher's computer:

- SMART Notebook
- SMART Response CE
- SMART Sync Teacher
- SMART Board drivers
- Gallery collections

To install Teacher components

1. Start the Teacher installation wizard (see page 3).
2. Click **Next**.
3. On the *License Agreement* page:
 - a. Review the license agreement.



TIP

If you want a hard copy of the license agreement for your school's records, click **Print**.

- b. If you accept the terms of the license agreement, click **I accept the terms in the license agreement**.
 - c. Click **Next**.
4. On the *Customer Information* page:
 - a. Type the teacher's user name in the **User Name** box.
 - b. Type the school's name in the **Organization** box.

5 | **CHAPTER 2 – INSTALLING SMART CLASSROOM SUITE**

- c. Type your product key in the **Product Key** box.

 **NOTES**

- This step is optional. If you don't provide a product key during installation, you can do so afterwards using the activation wizard (see page 10).
 - You can find your product key on an insert inside the DVD case. If you downloaded SMART Classroom Suite from the SMART support site, you can purchase a product key from your reseller.
- d. Click **Anyone who uses this computer** to allow all users access to SMART Classroom Suite.

OR

Click **Only for me** to allow only the current user access to SMART Classroom Suite.

- e. Click **Next**.

6 | **CHAPTER 2 – INSTALLING SMART CLASSROOM SUITE**

5. On the *Setup Type* page:

Click **Complete** to install all Teacher components (including all Gallery collections), and then click **Next**.

OR

- a. Click **Custom** to install select Teacher components, and then click **Next**.
- b. Select the programs you want to install.



IMPORTANT

If you choose not to install a program that is currently on the computer, see page 20.

- c. If you're installing SMART Board drivers, select the **Add SMART Tools to the Startup folder** check box to start Floating Tools automatically each time the Windows operating system starts.
- d. If you want to change the installation folder, click **Change**, and then use the dialog box to browse to and select a new folder.



NOTE

The default installation folder is **C:\Program Files\SMART Technologies\Classroom Teacher**.

- e. Click **Next**.
- f. Select the Gallery collections you want to install.



NOTE

If you downloaded the installation wizard (see page 3) and then choose to install Gallery collections, the wizard downloads and installs the collections from the SMART website. Depending on your Internet connection, this process can take several minutes.

- g. Click **Next**.

7 | CHAPTER 2 – INSTALLING SMART CLASSROOM SUITE

6. Click **Install**.

The wizard installs the selected Teacher components.

7. Click **Finish**.

The wizard closes.

Installing Student Components

After starting the SMART Classroom Suite 2009 Student installation wizard, you can run this wizard to install the following components on the students' computers:

- SMART Notebook SE
- SMART Sync Student
- Gallery collections

NOTE

SMART Notebook SE includes handwriting recognition in English only. To use handwriting recognition with other languages, install SMART Board drivers (included in the Teacher installation wizard) on students' computers.

To install Student components

1. Start the Student installation wizard (see page 3).
2. Click **Next**.

The wizard checks the computer for existing instances of the Student components.

NOTE

Windows Installer will remove these instances before installing the suite (see page 20).

Click **Continue** to resume the installation.

8 | CHAPTER 2 – INSTALLING SMART CLASSROOM SUITE

3. On the *License Agreement* page:

- a. Review the license agreement.



TIP

If you want a hard copy of the license agreement for your school's records, click **Print**.

- b. If you accept the terms of the license agreement, click **I accept the terms in the license agreement**.
- c. Click **Next**.

4. On the *Customer Information* page:

- a. Type the student's user name in the **User Name** box.
- b. Type the school's name in the **Organization** box.
- c. Type your product key in the **Product Key** box.



NOTES

- This step is optional. If you don't provide a product key during installation, you can do so afterwards using the activation wizard (see page 10).
 - You can find your product key on an insert inside the DVD case. If you downloaded SMART Classroom Suite from the SMART support site, you can purchase a product key from your reseller.
- d. Click **Anyone who uses this computer** to allow all users access to SMART Classroom Suite.

OR

Click **Only for me** to allow only the current user access to SMART Classroom Suite.
 - e. Click **Next**.

5. On the *Setup Type* page:

Click **Complete** to install all Student components (including all Gallery collections), and then click **Next**.

OR

- a. Click **Custom** to install select Student components, and then click **Next**.
- b. Select the programs you want to install.



IMPORTANT

If you choose not to install a program that is currently on the computer, see page 20.

- c. If you want to change the installation folder, click **Change**, and then use the resulting dialog box to browse to and select a new folder.



NOTE

The default installation folder is **C:\Program Files\SMART Technologies\Classroom Student**.

- d. Click **Next**.
- e. Select the Gallery collections you want to install.



NOTE

If you downloaded the installation wizard (see page 3) and then choose to install Gallery collections, the wizard downloads and installs the collections from the SMART website. Depending on your Internet connection, this process can take several minutes.

- f. Click **Next**.
6. Click **Install**.
- The wizard installs the selected Student components.
7. Click **Finish**.
- The wizard closes.

Activating SMART Classroom Suite

During installation, you have the option of entering your product key. If you choose not to enter a product key during installation, you can do so afterwards using the activation wizard.

You can purchase a product key from your reseller.



IMPORTANT

You must enter your product key within 90 days of installing SMART Classroom Suite 2009.

To activate the suite

1. On the teacher's computer, start one of the suite's component programs (see page 11).

The *Evaluation Version* dialog box appears.

2. Click **Activate Product**.
3. Type the 22-character product key in the **Product Key** box, and then click **Next**.

The activation wizard validates the product key and activates SMART Classroom Suite 2009.

4. Click **Finish**.

Chapter 3

Using SMART Classroom Suite

After you install SMART Classroom Suite, teachers and students can start the software on their computers. They can then refer to the Help system to learn more about using the components of the suite.

Using Teacher Components

Starting Teacher Components

To start SMART Notebook

Double-click the **SMART Notebook 10** icon on your desktop.

OR

Select **Start > All Programs > SMART Technologies > SMART Notebook > SMART Notebook 10**.

To start SMART Sync Teacher

Double-click the **SMART Sync Teacher 2009** icon on your desktop.

OR

Select **Start > All Programs > SMART Technologies > SMART Sync > SMART Sync Teacher 2009**.

Viewing Help

For information on using the Teacher components of SMART Classroom Suite, see the software's Help.

To view Help

Select **Help > Contents** in the program.

OR

Place your cursor over a dialog box, button or menu option and press F1.

NOTE

The second option isn't available in SMART Response CE Teacher Tools.

Using Student Components

Starting Student Components

To start SMART Notebook SE

Double-click the **SMART Notebook SE** icon on the desktop.

OR

Select **Start > All Programs > SMART Technologies > SMART Notebook SE**.

To start SMART Sync Student

The method for starting SMART Sync Student depends upon installation settings and the student's hardware.

Depending on the installation settings, SMART Sync Student may start automatically when the computer starts.

If the software doesn't start automatically, or if you've closed the software since the computer started, double-click the **SMART Sync Student 2009** icon on the desktop.

Viewing the SMART Notebook SE Help

For information on using SMART Notebook SE, see the software's Help.

To view the SMART Notebook SE Help

Select **Help > Contents**.

OR

Place your cursor over a dialog box, button or menu option and press F1.

Chapter 4

Configuring SMART Sync Student

If you previously installed and configured SMART Sync Student on a student's computer, the installation wizard uses that installation's **SyncClient.ini** file to configure SMART Sync Student. Otherwise, the wizard uses a default **SyncClient.ini** file. In either case, you can configure SMART Sync Student using the SMART Sync Student Configuration Tool.

Running the SMART Sync Student Configuration Tool

If you want to configure your school's SMART Sync Student installations, you can manually run the SMART Sync Student Configuration Tool.

To run the SMART Sync Student Configuration Tool

1. On the teacher's computer, browse to and open **C:\Program Files\SMART Technologies\Classroom Teacher\Sync Teacher\StudentConfig.exe**.

The *SMART Sync Student Configuration Tool* window appears.

2. Click **Next**.
3. Click one of the following options:

Option	Click this option to:
Visible to students	Show the SMART Sync user interface to the student.
Hidden from students	Hide the SMART Sync user interface from the student.

 **NOTE**




If you click **Hidden from students**, the student will not be able to do the following:

- Connect to a teacher by selecting the teacher's name from a list
- Manually start SMART Sync Student
- Manually enter the student's ID after starting SMART Sync Student

The relevant controls in SMART Sync Student Configuration Tool will be disabled or hidden.

4. Click **Next**.

5. Click one of the following options:

Option	Click this option to:
Allows the student to select from a list of available teachers	<p>Allow the student to select a teacher from a list.</p> <p> NOTE This option is disabled if you clicked Hidden from student in step 3.</p>
Automatically connects with this Teacher ID	<p>Connect SMART Sync to a specific teacher through the teacher's ID.</p> <p>Type the ID in the box to the right of the option.</p>
Automatically connects with this hostname or IP address	<p>Connect SMART Sync to a specific teacher through the host name or IP address.</p> <p>Type the host name or IP address in the box to the right of the option.</p> <p> NOTE If your network uses DHCP, SMART Technologies recommends that you refer to the computer by host name rather than by IP address.</p>
Uses this Class List Server hostname or IP address	<p>Connect SMART Sync to a specific teacher using SMART Sync Class List Server.</p> <p>Type the host name or IP address of the SMART Sync Class List Server computer in the box to the right of the option.</p> <p> NOTE If your network uses DHCP, SMART Technologies recommends that you refer to the SMART Sync Class List Server computer by host name rather than by IP address.</p>

17 | **CHAPTER 4 – CONFIGURING SMART SYNC STUDENT**

6. If the computer has multiple network adapters, click **Network Adapter Selection** to specify the order of the network adapters.
7. Click **Next**.
8. Clear the **Start SMART Sync Student automatically...** check box if you don't want SMART Sync Student to start when the student first logs on.



NOTE

This check box is disabled if you clicked **Hidden from student** in step 3.

9. Select the student's language in the **Language** drop-down list.
10. Select the following check boxes:

Check Box	Select this check box to:
Ask questions	Allow the student to ask questions through SMART Sync.
Chat	Allow the student to chat with other students through SMART Sync.
Submit files	Allow the student to submit files through SMART Sync.
Exit the Student program	Allow the student to close SMART Sync Student.




NOTE

These check boxes aren't visible if you clicked **Hidden from student** in step 3.

11. Click **Next**.

12. Click one of the following options:

Option	Click this option to:
Student Controlled	Allow the student to enter an ID when SMART Sync Student starts.  NOTE This option is disabled if you clicked Hidden from student in step 3.
The following	Enter a specific student ID. Type the ID in the box to the right of the option.
Found in this Active Directory field...	Find the student ID in an Active Directory® directory service field of the student's logon account. Type the Active Directory directory service field name in the box to the right of the option.
Anonymous	Allow the student to use SMART Sync Student without entering an ID.

13. Click **Next**.

14. Click one of the following options:

Option	Click this option to:
My Documents folder	Store files the teacher shares with the student in the My Documents folder.
Custom folder	Store files in another folder. Type the path to the folder in the box below the option.

15. Click **Next**.

16. Click one of the following options:

Option	Click this option to:
No security	Allow any teacher with SMART Sync Teacher to connect to the student.
Allow only teachers with this class password	Allow only teachers who enter a specified password in SMART Sync Teacher to connect to the student. Type the password in the two boxes to the right of the option.
Allow only Teachers who are part of the following group(s)	Allow only teachers in select groups to connect to the student. Select the groups in the box below the option.

17. Click **Next**.
18. Click **Finish**.
The *Restart Required to Apply Settings* message appears.
19. Click **OK**.

Automatically Configuring SMART Sync Student Installations

After you create a **SyncClient.ini** file with the SMART Sync Student Configuration Tool, copy the file to a central location on your network. (The **SyncClient.ini** file is located in **C:\Program Files\SMART Technologies\Classroom Teacher\Sync Teacher**.) You can then copy the file to existing SMART Sync Student installations to configure them.

Appendix A

Existing SMART Software and the Suite

When you install SMART Classroom Suite, the installation wizard checks the computer for instances of the following components (all versions):

Teacher	Student
• SMART Notebook	SMART Notebook SE
• SMART Sync Teacher	SMART Sync Student
• SMART Response or Senteo™ assessment software	
• SMART Board drivers	

The installation wizard informs you if it finds instances of one or more of these components. After you complete all remaining steps in the wizard and click **Install**, Windows Installer removes the existing instances of the components, and then reinstalls them as part of the suite. (In the case of SMART Response or Senteo assessment software, Windows Installer installs SMART Response CE instead.)



IMPORTANT

If you choose not to install a specific component of the suite but there is an existing instance of the component on the computer, Windows Installer removes the component but doesn't reinstall it as part of the suite.

After installing SMART Classroom Suite, don't install standalone instances of the suite's component programs. If you attempt to install a standalone instance, the installation wizard will detect the suite and not allow you to continue.



NOTE

Only recently released versions of the component programs include this detection feature.

Appendix B

Language Setup

SMART Classroom Suite supports the following languages:

- English (U.S.)
- English (UK)
- Arabic
- Chinese
- Czech
- Danish
- Dutch
- Finnish
- French
- German
- Greek
- Hungarian
- Italian
- Norwegian
- Polish
- Portuguese (Portugal)
- Portuguese (Brazil)
- Russian
- Spanish (Spain)
- Spanish (Mexico)
- Swedish
- Turkish

The components of the suite display the language appropriate to the computer's location. If the computer's local language isn't one of the 22 supported by the suite, the components display English (U.S.) by default.

NOTE

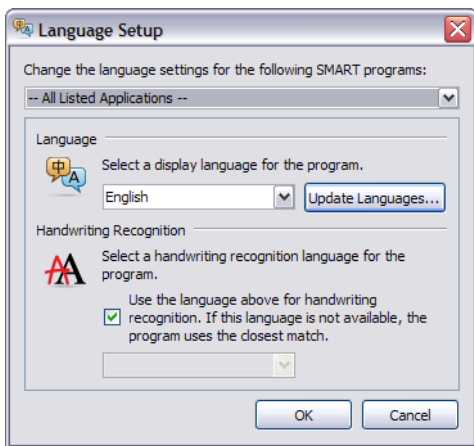
If you installed one or more of the components of SMART Classroom Suite before installing the suite itself, the installation wizard removes the components (including all installed languages) and then reinstalls them as part of the suite.

The standalone versions of SMART Notebook and SMART Notebook SE support the above 22 languages as well as others. Therefore, when you install the suite on a computer with a local language supported by the standalone versions but not supported by the suite, SMART Notebook and SMART Notebook SE display English (U.S.) after the installation. You can download and apply the original language for SMART Notebook or SMART Notebook SE by completing the following procedure.

To return SMART Notebook or SMART Notebook SE to its original language

1. In SMART Notebook or SMART Notebook SE, select **View > Language Setup**.

The *Language Setup* dialog box appears.



2. Select **SMART Notebook** or **SMART Notebook SE** in the first drop-down list.
3. Click **Update Languages**, and then follow the on-screen instructions to download the desired language.
4. Select the language in the second drop-down list.

5. Select the check box to use this language for handwriting recognition.

OR

Select the language you want to use for handwriting recognition in the third drop-down list.

6. Click **OK**.

Appendix C

Customer Support

Online Information and Support

Visit www.smarttech.com/support to view and download user's guides, how-to and troubleshooting articles, software and more.

Training

Visit www.smarttech.com/trainingcenter for training materials and information about our training services.

Technical Support

If you experience difficulty with your SMART product, please contact your local reseller before contacting SMART Technical Support. Your local reseller can resolve most issues without delay.

NOTE

To locate your local reseller, visit www2.smarttech.com/st/en-US/Where+to+Buy.

All SMART products include online, telephone, fax and e-mail support:

Online	www.smarttech.com/contactsupport
Telephone	+1.403.228.5940 or Toll Free 1.866.518.6791 (U.S./Canada) (Monday to Friday, 5 a.m. – 6 p.m. Mountain Time)
Fax	+1.403.806.1256
E-mail	support@smarttech.com

General Inquiries

Address	SMART Technologies 3636 Research Road NW Calgary, AB T2L 1Y1 CANADA
Switchboard	+1.403.245.0333 or Toll Free 1.888.42.SMART (U.S./Canada)
Fax	+1.403.228.2500
E-mail	info@smarttech.com

Registration

To help us serve you, register online at www.smarttech.com/registration.

SMARTTM

Toll Free 1.866.518.6791 (U.S./Canada)
or +1.403.228.5940
www.smarttech.com

99-00995-20-A0