

Knowledge Base

Projector's Image Doesn't Fit Your SMART Board™ 600i3 Interactive Whiteboard System's Screen

SMART Hardware

SMART Board™ 600i3 interactive whiteboard system

Issue

The UF55/UF55w projector's image doesn't fit your SMART Board 600i3 interactive whiteboard system's screen.

Cause

Your computer's resolution doesn't match the default resolution of the UF55/UF55w projector.

The default resolution for each model of projector is as follows:

- Model UF55: 1024 x 768
- Model UF55w: 1280 x 800

Solution

First, try to match your computer's resolution to the projector's resolution. If that isn't possible, use the procedure on page 4 to adjust the projector's aspect ratio settings based on the following guidelines.

When using a UF55w projector:

- If your computer's aspect ratio is 16:10 but higher than 1280 × 800, for example, 1680 × 1050, set the projector's aspect ratio to **Match Input** or **Fill Screen**.
- If your computer's resolution is 1280 × 720, set the projector's aspect ratio to **Match Input** or **16:9**.
- If your computer has a 16:9 resolution, for example 1080i, set the projector's aspect ratio to **Fill Screen** or **16:9**.

When using a UF55 projector:

- If your computer's aspect ratio is 16:10, set the projector's aspect ratio to **Match Input**.
- If your computer's resolution is 1280 × 720, set the projector's aspect ratio to **Match Input** or **16:9**.
- If your computer has a 16:9 resolution, for example 1080i, set the projector's aspect ratio to **Fill Image** or **16:9**.
- If your computer's aspect ratio is 4:3 or 4:5, set the projector to **Match Input**.

The following table presents common display resolutions, their associated aspect ratios and the recommended settings for the UF55/UF55w projector.

Resolution	Aspect Ratio	Recommended Projector Settings
320 × 240	4:3	Match Input
640 × 480	4:3	Match Input
800 × 600	4:3	Match Input
1024 × 768	4:3	Match Input
1280 × 960	4:3	Match Input
1400 × 1050	4:3	Match Input
1600 × 1200	4:3	Match Input
2048 × 1536	4:3	Match Input
2800 × 2100	4:3	Match Input
3200 × 2400	4:3	Match Input
640 × 360	16:9	Fill Screen or 16:9
1024 × 576	16:9	Fill Screen or 16:9
1280 × 800	16:10	Match Input
1366 × 768	16:9	Fill Screen or 16:9
1440 × 900	16:10	Match Input or Fill Screen
1680 × 1050	16:10	Match Input or Fill Screen
1920 × 1200	16:10	Match Input or Fill Screen
2560 × 1600	16:10	Match Input or Fill Screen
3840 × 2400	16:10	Match Input or Fill Screen
3840 × 2160	16:9	Fill Screen or 16:9

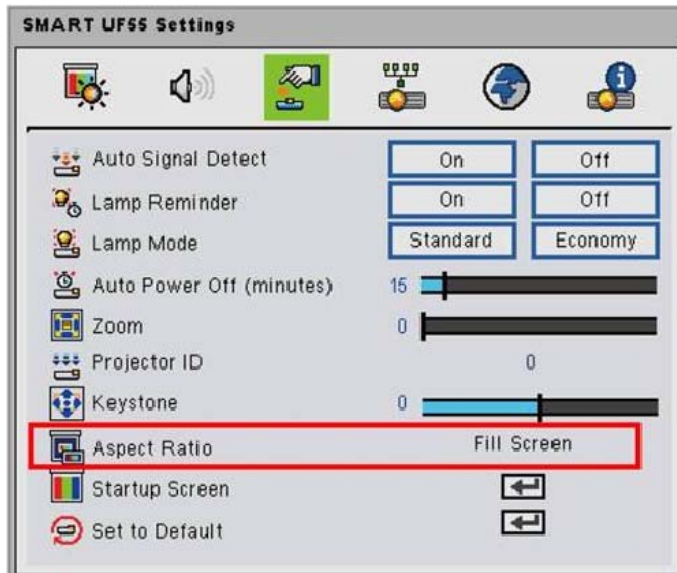
To change the aspect ratio setting

1. Press the **Menu** button on the remote control for your SMART board 600i3 interactive whiteboard.

The *SMART UF55 Settings* window appears.

2. Select the third icon at the top of the window by pressing the right or left arrow buttons on the remote control.

The active selection is green.



3. Select **Aspect Ratio**.
4. Select **Fill Screen**, **Match Input** or **16:9** based on the general guidelines listed previously.

First Published July 10, 2009