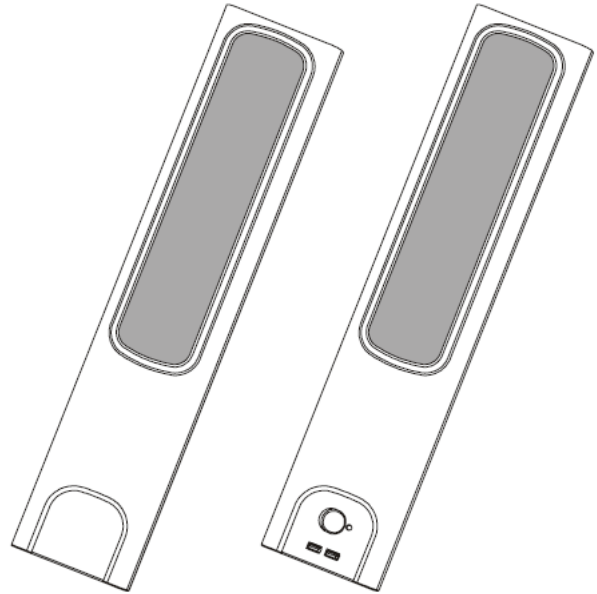




SMART™



Service Parts Diagrams

For Model:

SBA

**For speakers with a 13
character serial number
format only**

(example A022BW2000228)

Service Parts Diagrams Revision History

Revision 1 - July, 2009

- New document

Standard Warranty Terms

Base product: One-year limited equipment warranty

First Customer Ship: August, 2009

SMART Technologies

3636 Research Road NW

Calgary, AB T2L 1Y1

CANADA

Support +1.403.228.5940 or Toll Free 1.866.518.6791 (Canada/U.S.)

Support Fax +1.403.806.1256

ServiceParts@smarttech.com www.smarttech.com

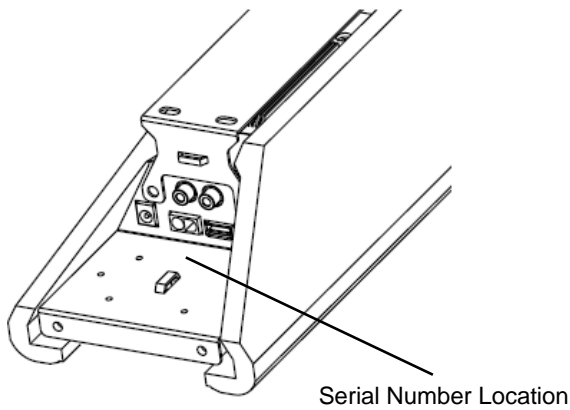


Service Parts Diagrams for the SBA USB Audio system for SMART Board 600 Series

Identifying Your Product Using the Serial Number 1
Ordering Parts 1
SBA Parts 2

Identifying Your Product Using the Serial Number

To make sure that you have the correct service parts diagrams, you must verify the serial number of your SMART SBA USB Audio system. These parts diagrams are only for speakers with a 13 character serial number format. The serial number will be located on the back of the control speaker. An example of the serial number format is shown below.



A022BW2000228

Serial Number Example

Ordering Parts

Customers

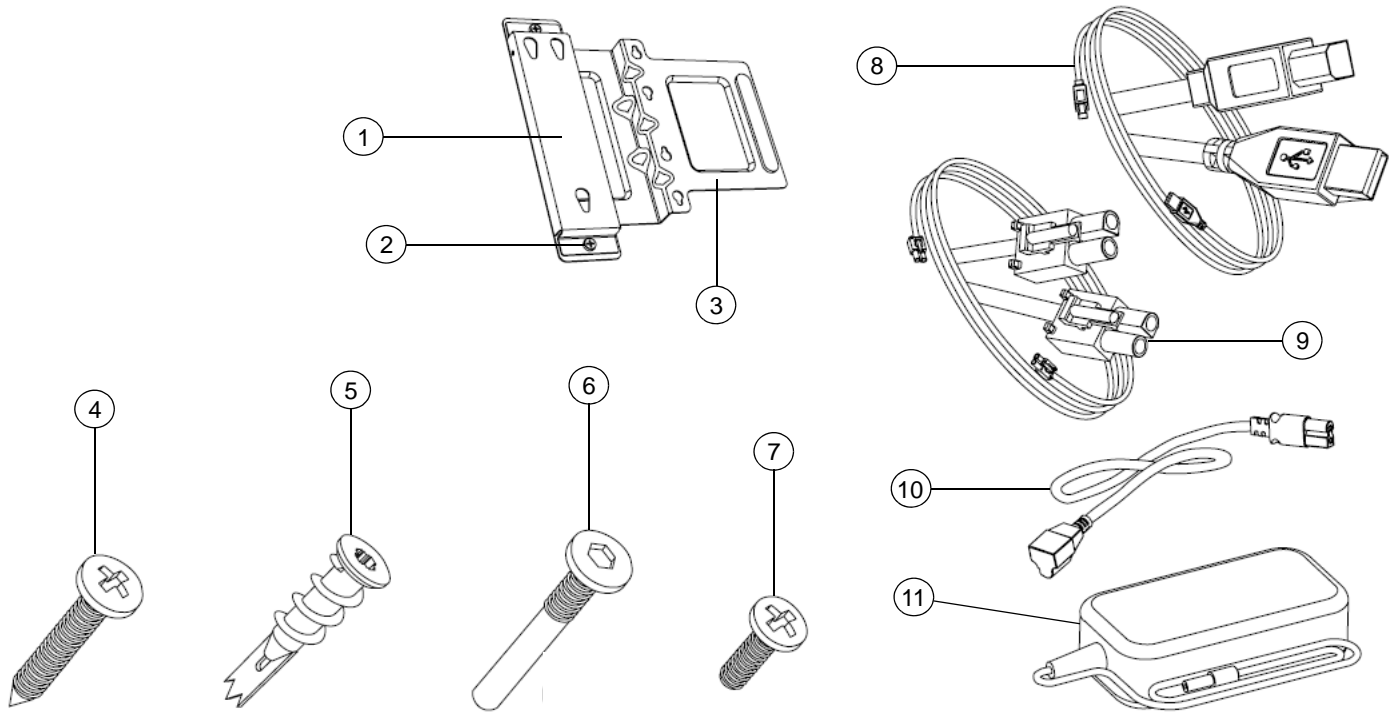
To order any of the parts in these service parts diagrams, contact your local reseller. To find a reseller near you, visit www.smarttech.com/where.

Dealers and Distributors

For specific technical and pricing enquiries in regards to these diagrams please contact our service parts department. Pricing is also available on-line via the SOURCE website (source.smarttech.com).

E-mail: serviceparts@smarttech.com
Phone: 1.888.42.SMART
International: +1.403.245.0333

SBA Parts



Item	Part No.	Qty	Description
1	51-00770-20	2	Bracket, wall mounting, speaker NOTE: Attaches to speaker body. NOTE: Not compatible with speakers with a 10 character serial number format (example 08-J-047633-C).
2	30-01247-20	4	Screw, M6 x 6 mm, Phillips, button head NOTE: For attaching 51-00770-20 to 51-00771-20.
3	51-00771-20	2	Bracket, SMART Board 600 Series mounting, speaker NOTE: Attaches to 51-00770-20 for mounting speakers to SMART Board 600 Series. NOTE: Not compatible with speakers with a 10 character serial number format (example 08-J-047633-C).
4	30-00969	4	Screw, No. 8 x 1", Phillips, truss head NOTE: Threads into drywall anchors for wall mounting.
5	30-00122-20	4	Anchor, self drilling, drywall
6	30-01248-20	2	Screw, M5 x 22 mm, hex socket, button head NOTE: For attaching 51-00770-20 to speaker body.
7	30-00915-20	8	Screw, No. 8 x 1/2", Phillips, pan head, for plastics NOTE: For attaching speakers to SMART Board 600 Series.
8	93-00535-00	1	Cable, USB, A-B, 11'6" (3.5 m)
9	93-00534-00	1	Cable, audio, speaker, 24'11" (7.6 m) NOTE: Connects audio from right to left speakers.
10	93-00592-20	1	Cable, power, North America, 6'7" (2 m)
10	93-00542-20	1	Cable, power, Europe, 6'7" (2 m)
10	93-00543-20	1	Cable, power, United Kingdom, 6'7" (2 m)
10	93-00576-20	1	Cable, power, Australia, 6'7" (2 m)
11	60-00039-20	1	Power supply, 15V DC, 4A, universal switching