

Addendum to the *Rear Projection SMART Board™ 4000i* Interactive Whiteboard Installation Guide

In order to obtain optimal image quality with your Epson PowerLite 9300i projector, we recommend downloading and then installing Powerstrip 3.52 or higher software from EnTech Taiwan on your computer hard drive. This software allows you to set your computer resolution to match the projector's native resolution of 1400 x 1050 (SXGA+).

Go to <http://www.entechtaiwan.com/index.shtm> to download this software and then install it on your computer. Next, configure the PowerStrip software as described below.

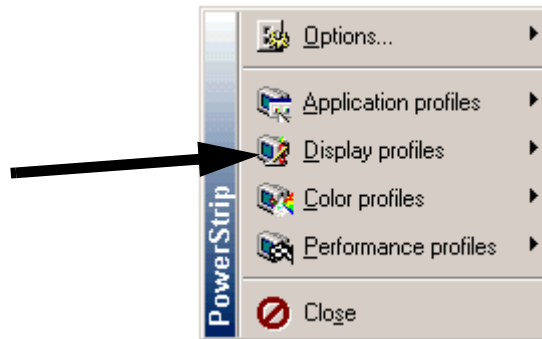
To configure your computer's resolution via the PowerStrip software

1. Click the PowerStrip icon in the system tray.

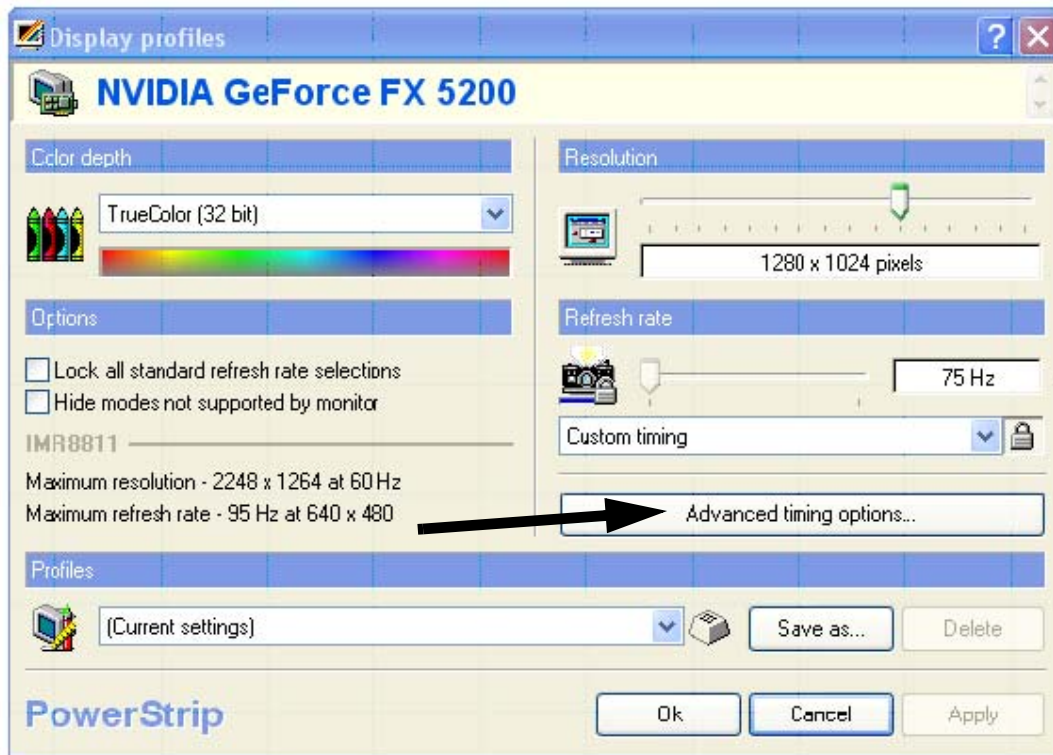


PowerStrip Icon

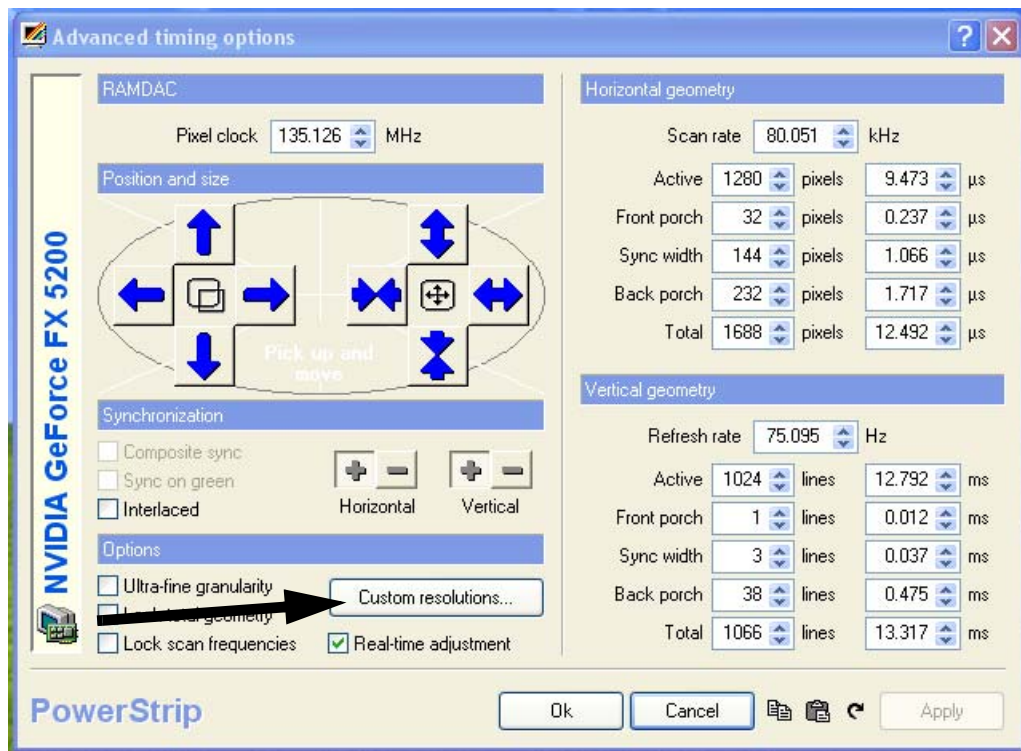
2. Select **Display profiles**.



3. Click **Configure**.
The *Display profiles* dialog box appears.

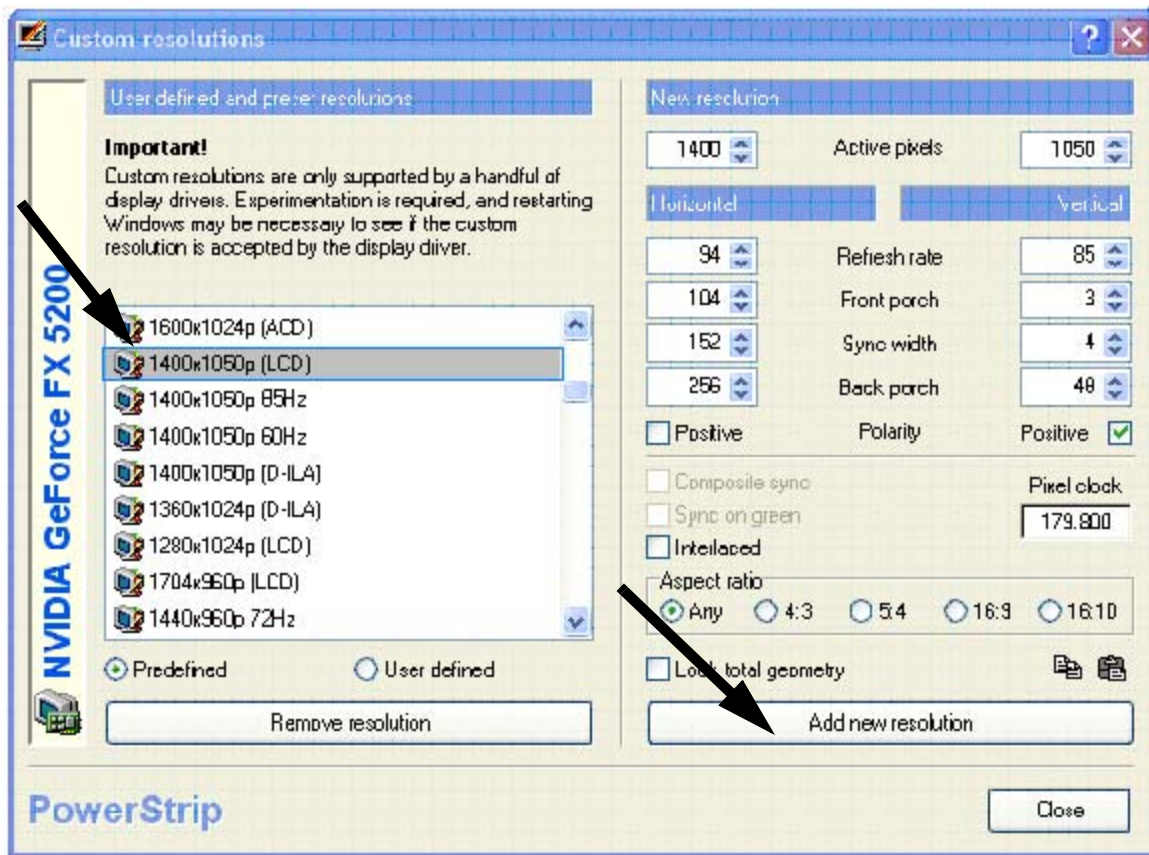


4. Click the **Advanced timing options** button.
The *Advanced timing options* dialog box appears.



5. Click the **Custom resolutions** button.

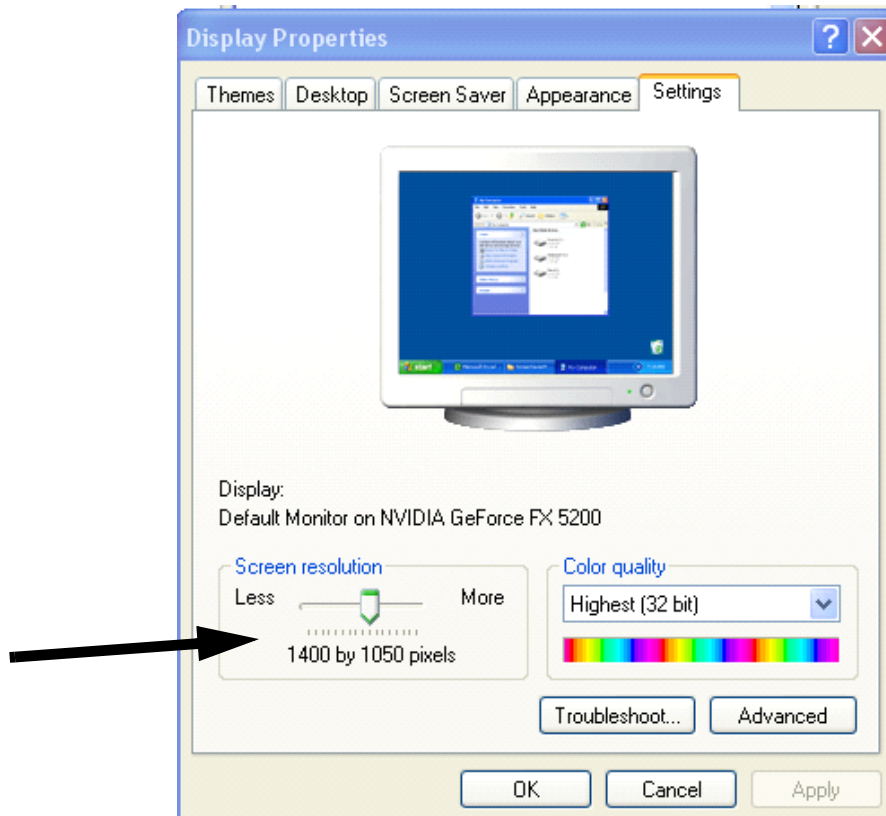
The *Custom resolutions* dialog box appears.



6. Scroll to and select **1400 x 1050p (LCD)**.
7. Click the **Add new resolution** button.
8. Click **OK** and close all windows.
9. Shut down and then restart your computer.
10. Right-click on your desktop and select **Properties**.

The *Display Properties* dialog box appears.

11. Click the **Settings** tab.



12. Drag the **Screen resolution** slider until the resolution is set to **1400 by 1050 pixels**.

WARNING



Selecting incorrect timing parameters may damage some external display devices. To prevent damage to an external monitor, consult your owner's manual about allowable resolution parameters.

NOTES

While these settings are optimal for the 4000i, they may not be supported by other connected display devices.

If your video card and monitor do not support this resolution, **1400 by 1050 pixels** will not appear under **Screen resolution**.

For guest laptop use, please note that some laptops don't support 1400 x 1050 resolution. If this is the case, you should select the closest resolution that your laptop supports.

13. Click **Apply** and **OK**.

14. Press the **Auto** and **Resize** buttons in the projector remote control or the projector control panel. The image on the 4000i screen should be very sharp and clear. If not, please contact SMART Technical Support for assistance.

TIP



If the 4000i image is not as sharp as you expect or remains the wrong size, you may need to adjust the refresh frequency of your computer monitor.

Click **Start>Settings>Control Panel>Display>Settings**. Click the **Advanced** button and then adjust the **Refresh Frequency**.

The refresh frequency range recommended by the *Epson PowerLite 9300i Multimedia Projector User's Guide* is from 60Hz to 85Hz.

SMART Technologies Inc.

Suite 300, 1207 – 11th Avenue SW

Calgary, AB CANADA T3C 0M5

Main Switchboard: 1.888.42.SMART (Canada/U.S.) or +1.403.245.0333

(all other countries)

Support Tel: 1.866.518.6791 (Canada/U.S.) or +1.403.228.5940 (all other countries)

Support Fax: +1.403.806.1256

support@smarttech.com www.smarttech.com

SMART
Technologies Inc.

99-00596-00 Rev A0

© 2004 SMART Technologies Inc. All rights reserved. SMART Board and the SMART logo are trademarks of SMART Technologies Inc. All other third-party product and company names may be trademarks of their respective owners.